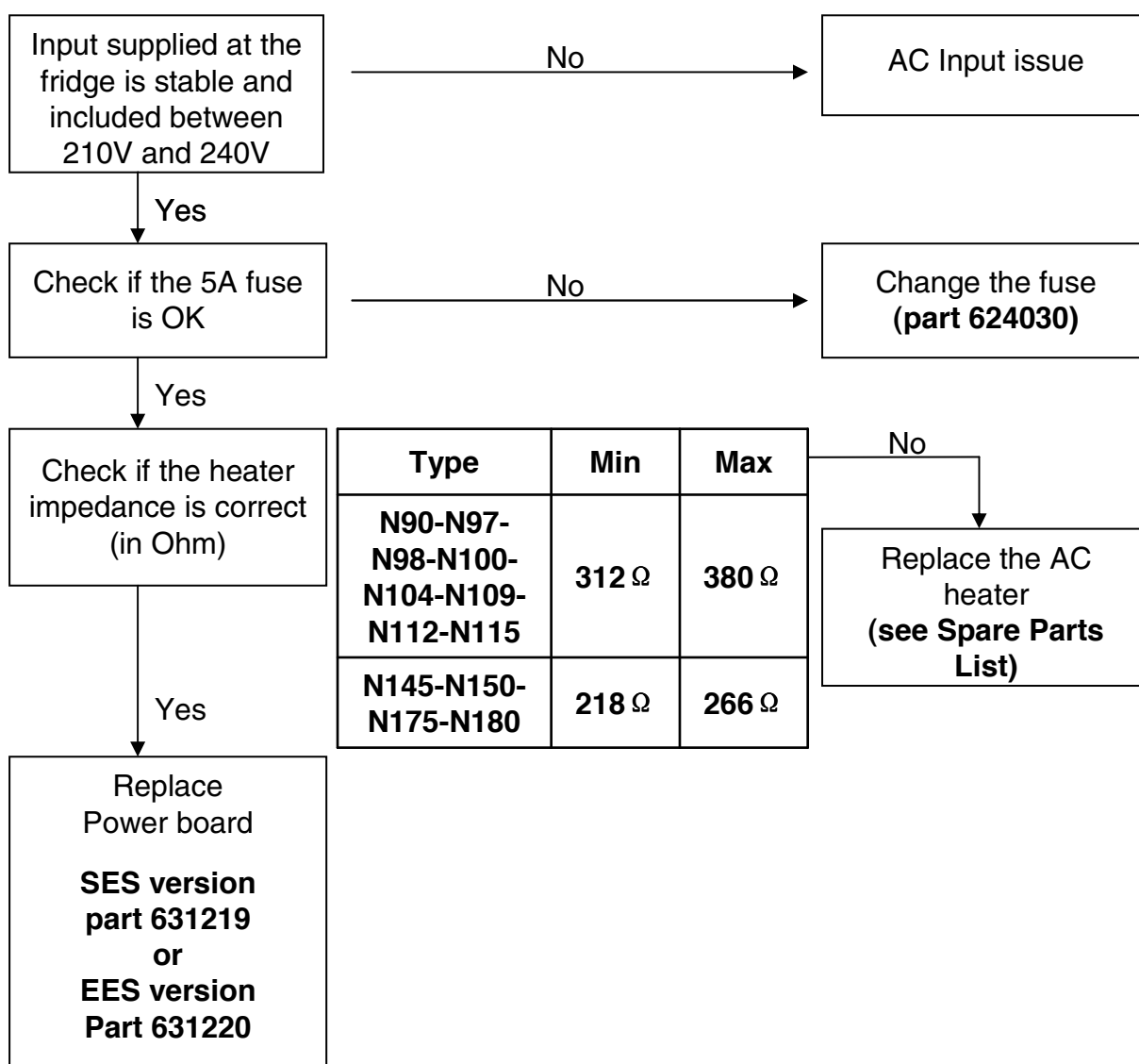
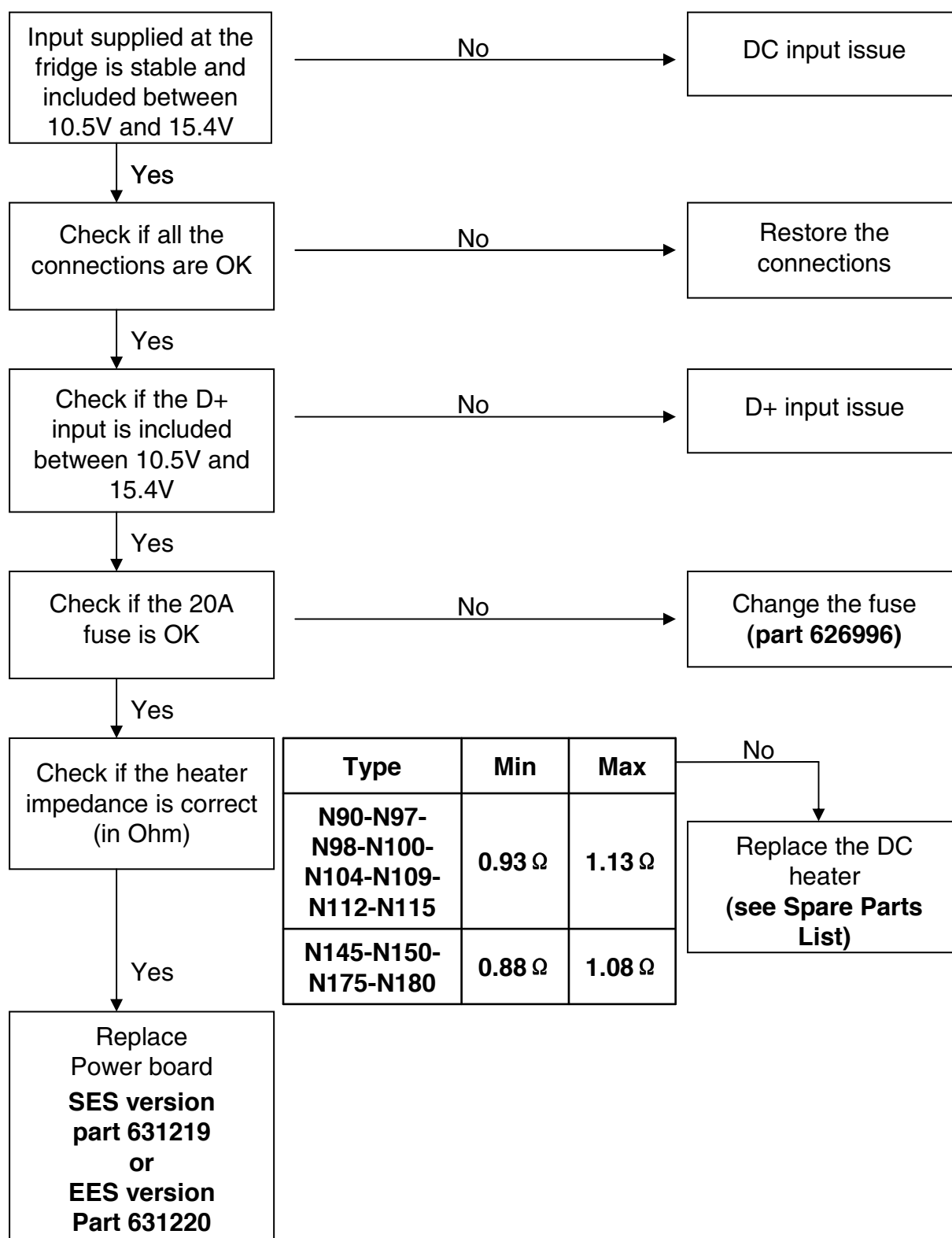


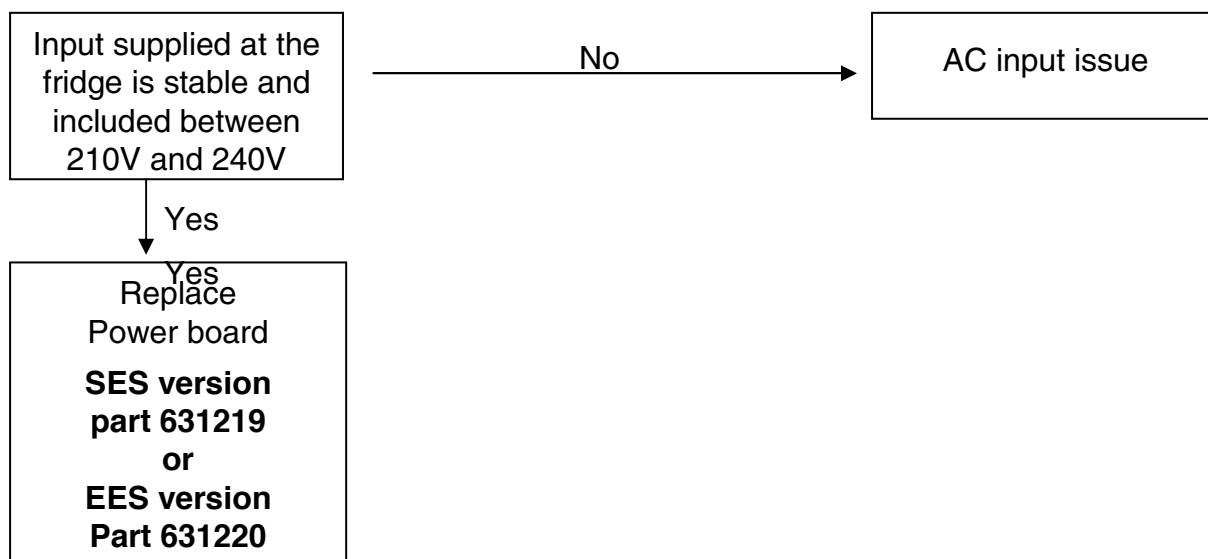
Error code 1: AC heater current is measured to be 75% below nominal current



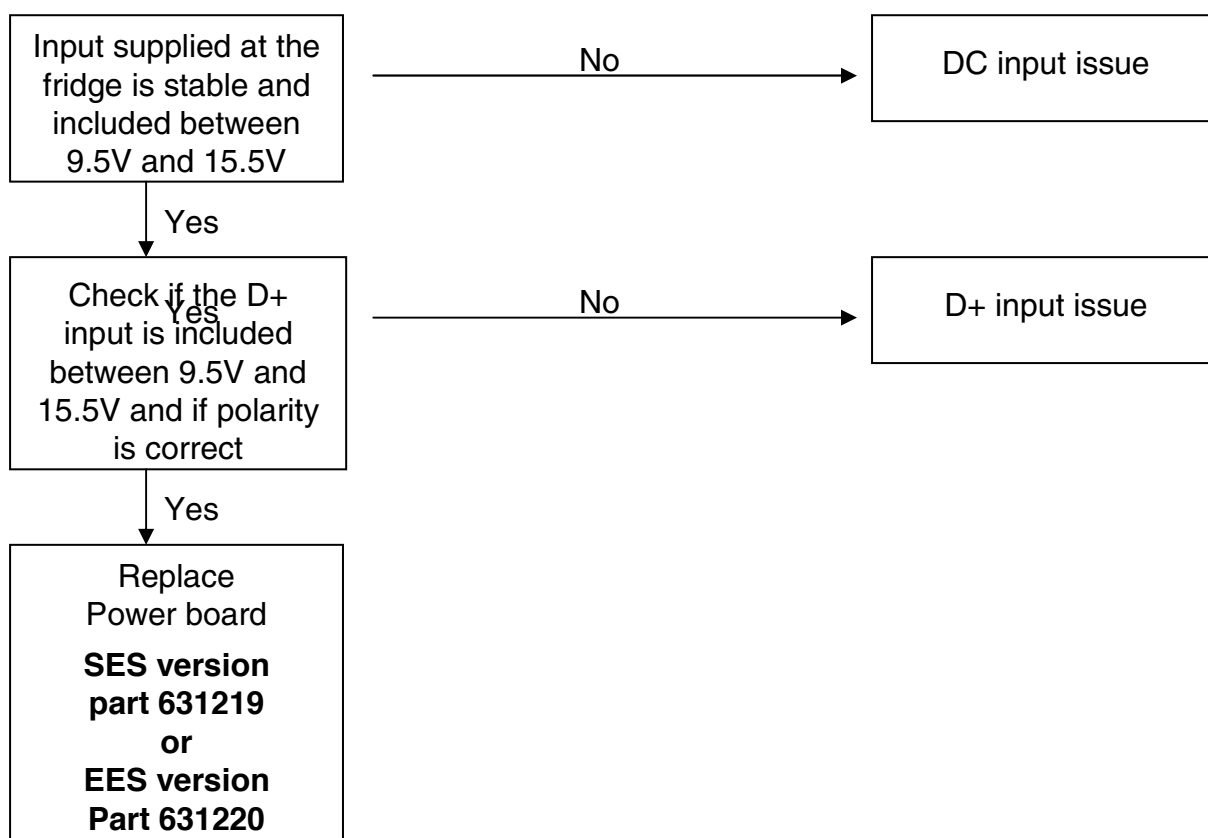
Error code 2: DC heater current is measured to be 75% below nominal current



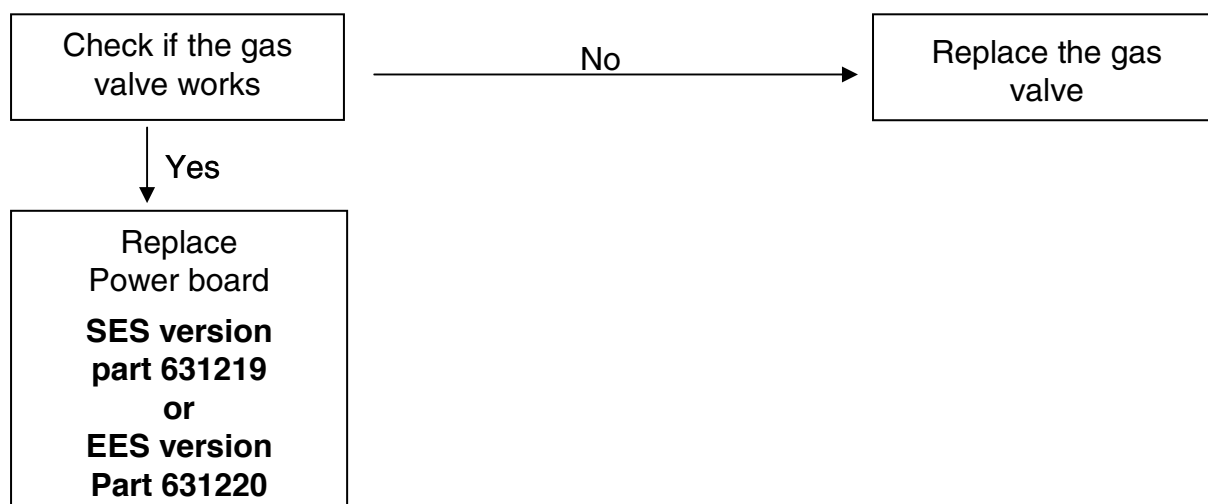
Error code 3: AC heater is ON when it should be OFF



Error code 4: DC heater is ON when it should be OFF



Error code 5: Senses flame when gas should be OFF



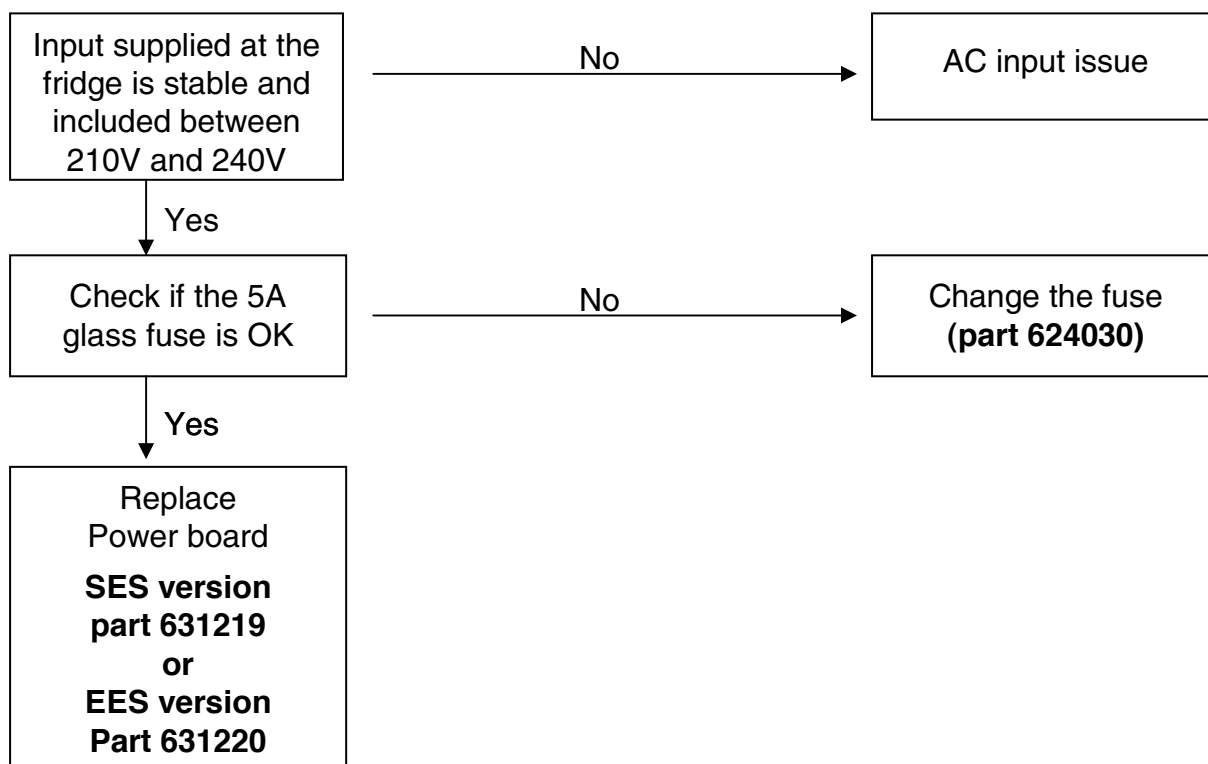
Error code 6: Senses gas output terminal ON when should be OFF

Replace Power board:	- SES version part 631219 - EES version part 631220
----------------------	--

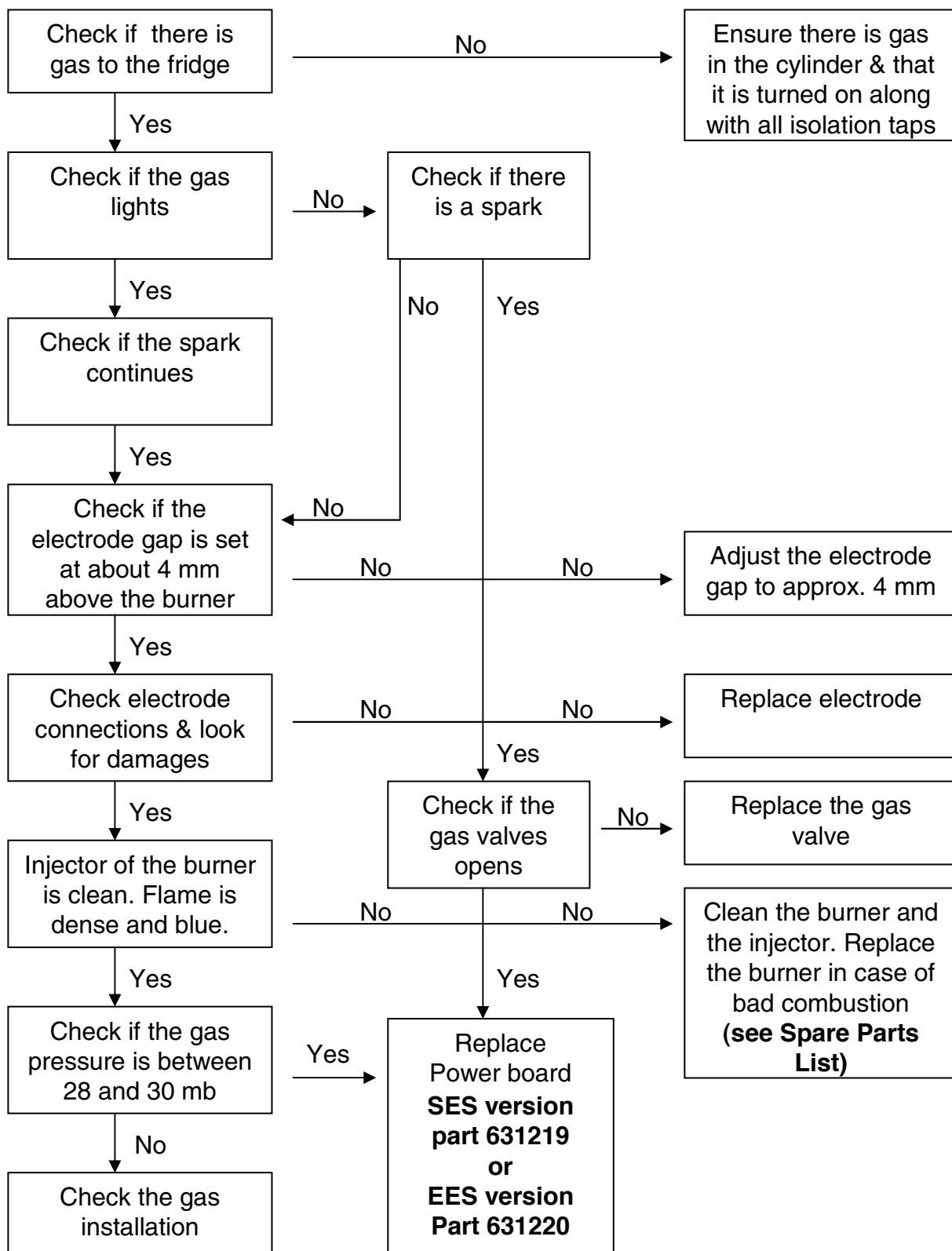
Error code 7: Senses gas output terminal OFF when should be ON

Replace Power board:	- SES version part 631219 - EES version part 631220
----------------------	--

Error code 8: AC mains supply is below 20% nominal



Error code 9: Gas lockout because flame fails to ignite after 30 seconds

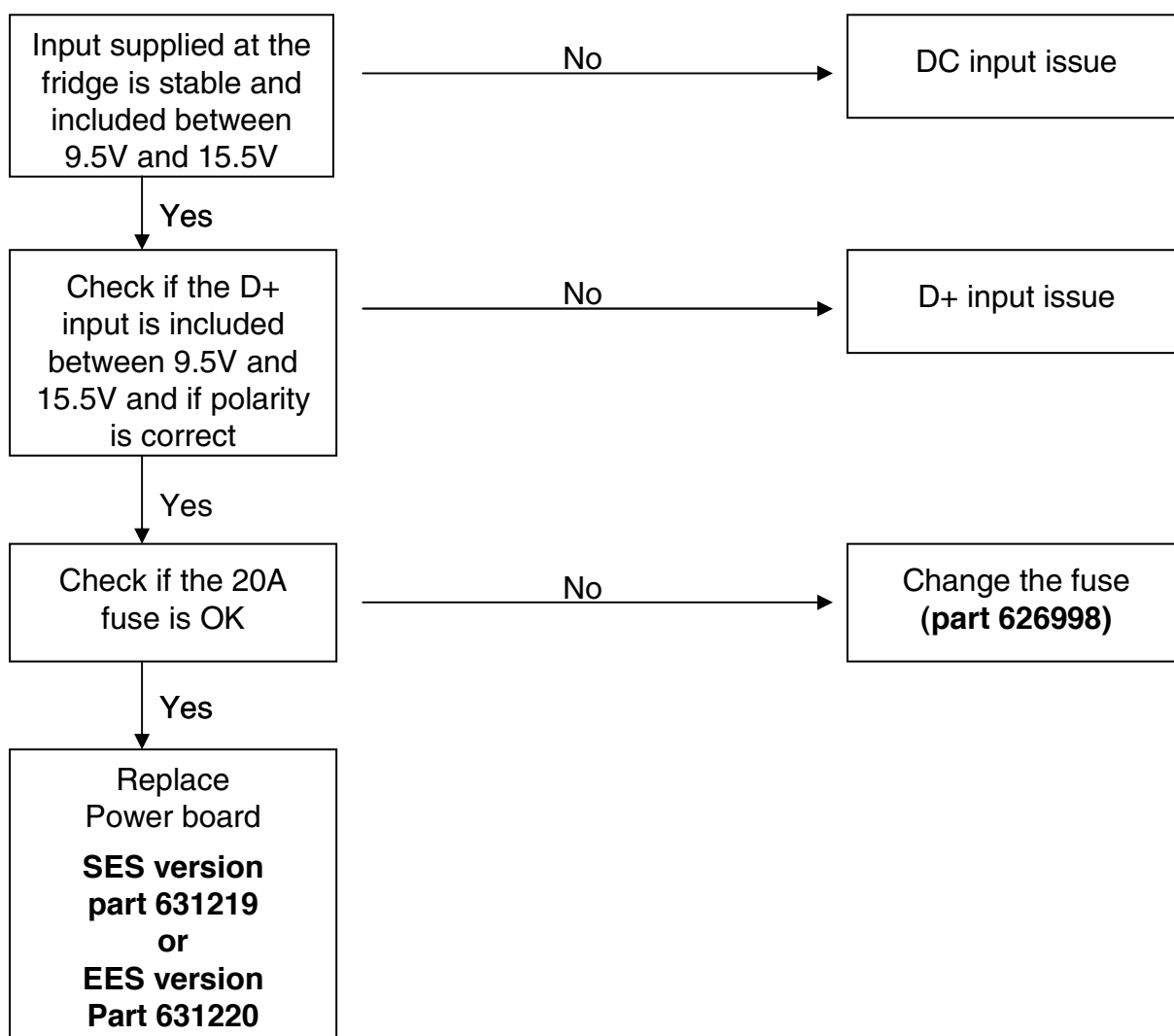


Error code 10: “No engine running” signal is present and control is in Manual DC mode



To know if D+ polarity is good, select manually DC mode engine off.

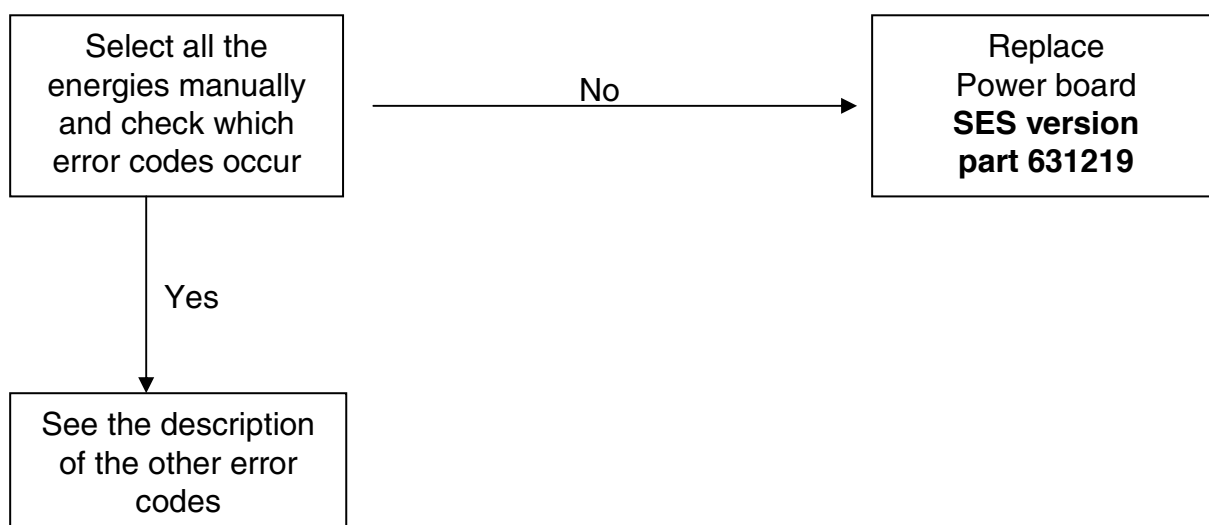
If no error code occurs, that means the D+ input is versed. Ensure power supply is capable to supply correct amperage.



Error code 11: No energy source is available and control is on AUTO mode



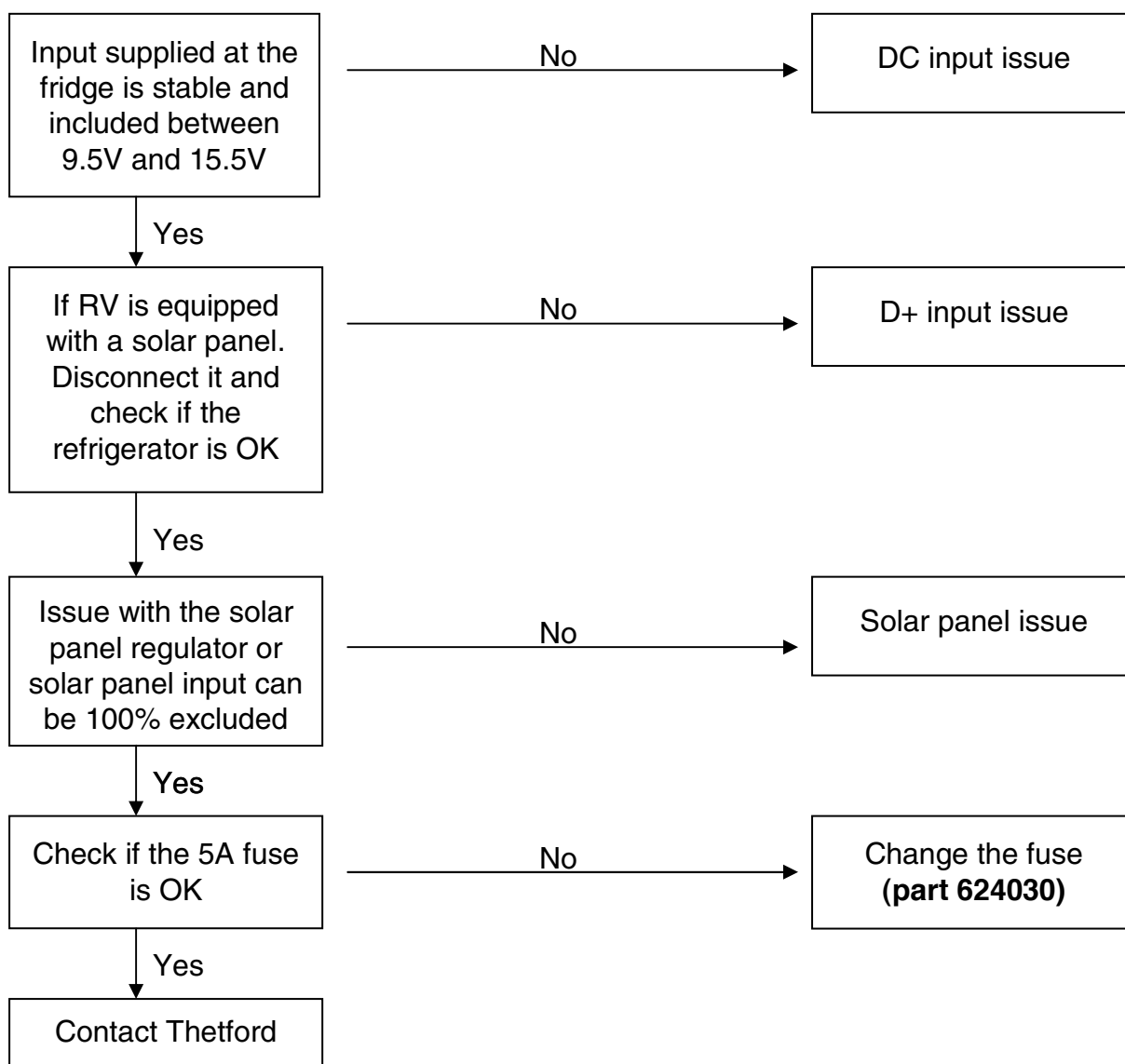
Please make sure that all energy sources are available during the trial



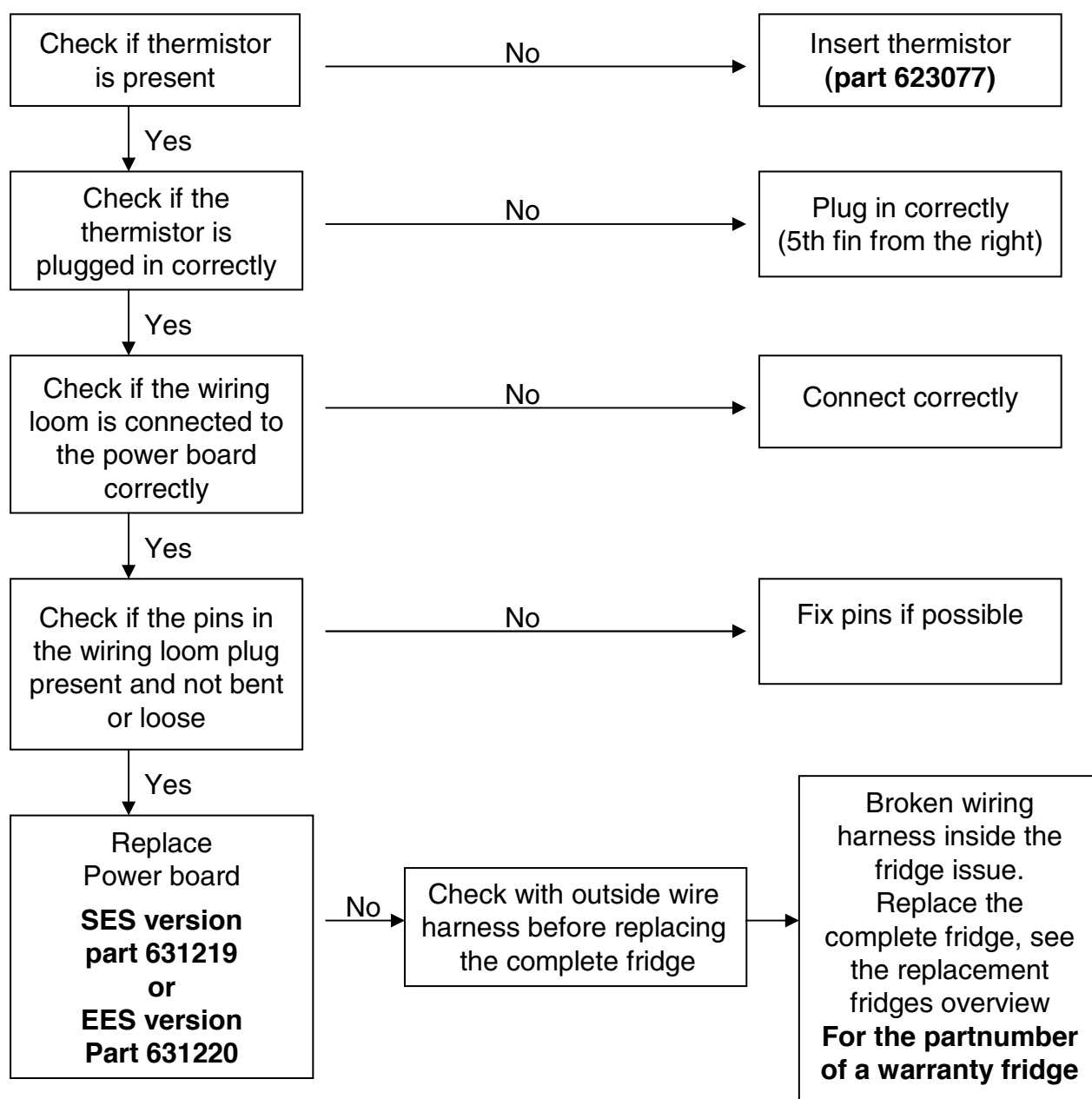
Error code 12: Supply voltage DC is out of range (9.5V 15.5V)



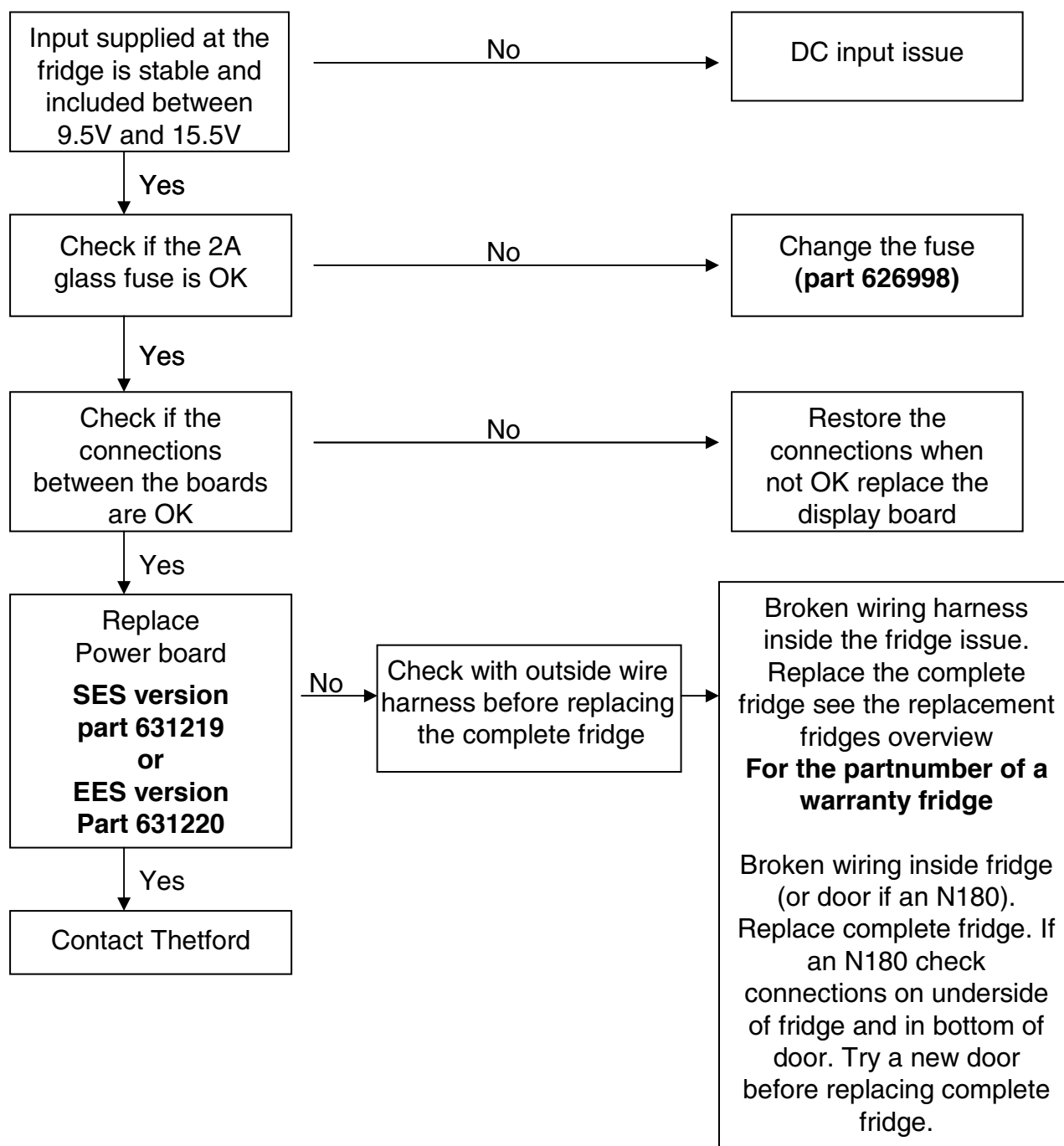
If DC mode have been selected manually, the refrigerator is not switching automatically on another source of energy when the engine is off



Error code 13: Thermistor fails, control automatically switches to backup mode (BOS)

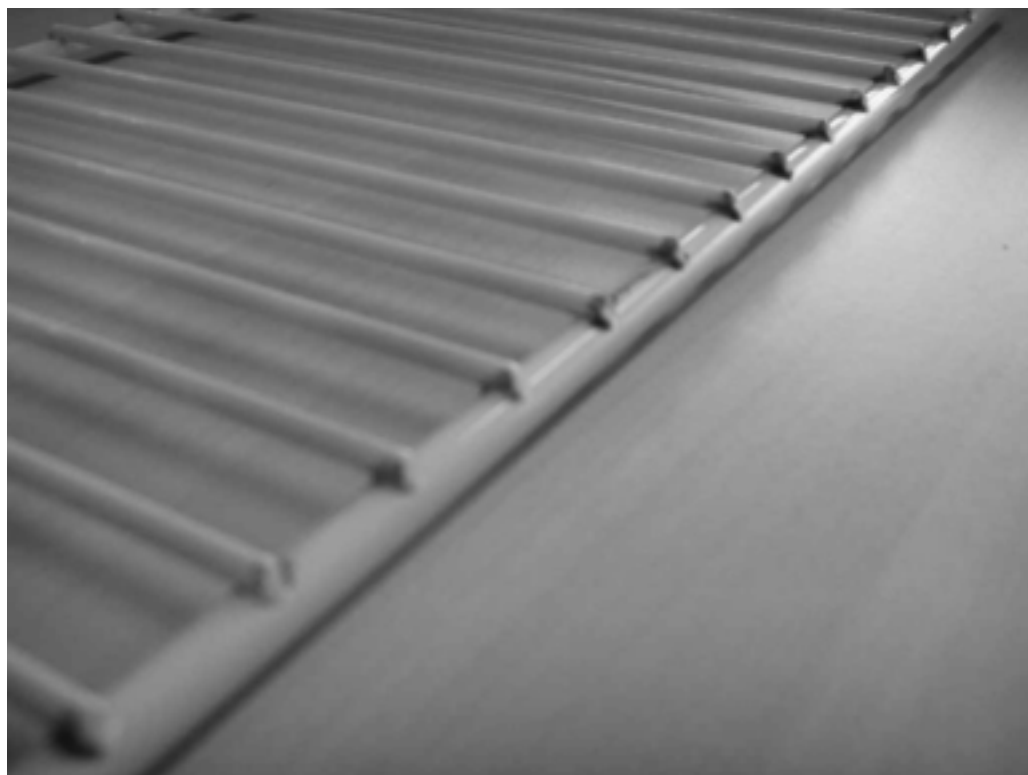


Error code 14: Display board and power board lost communication to each other



Corrosion on all Fridges shelves

Issue	: Corrosion on all shelves
Solution	: Re-inforced coating process to prevent rusting during life time product (7 years)
Implementation	: June 22nd 2007 for all shelves
Spare part nr.	: See spare part list
Compensation	: 5 minutes
Repair-instruction	: not included

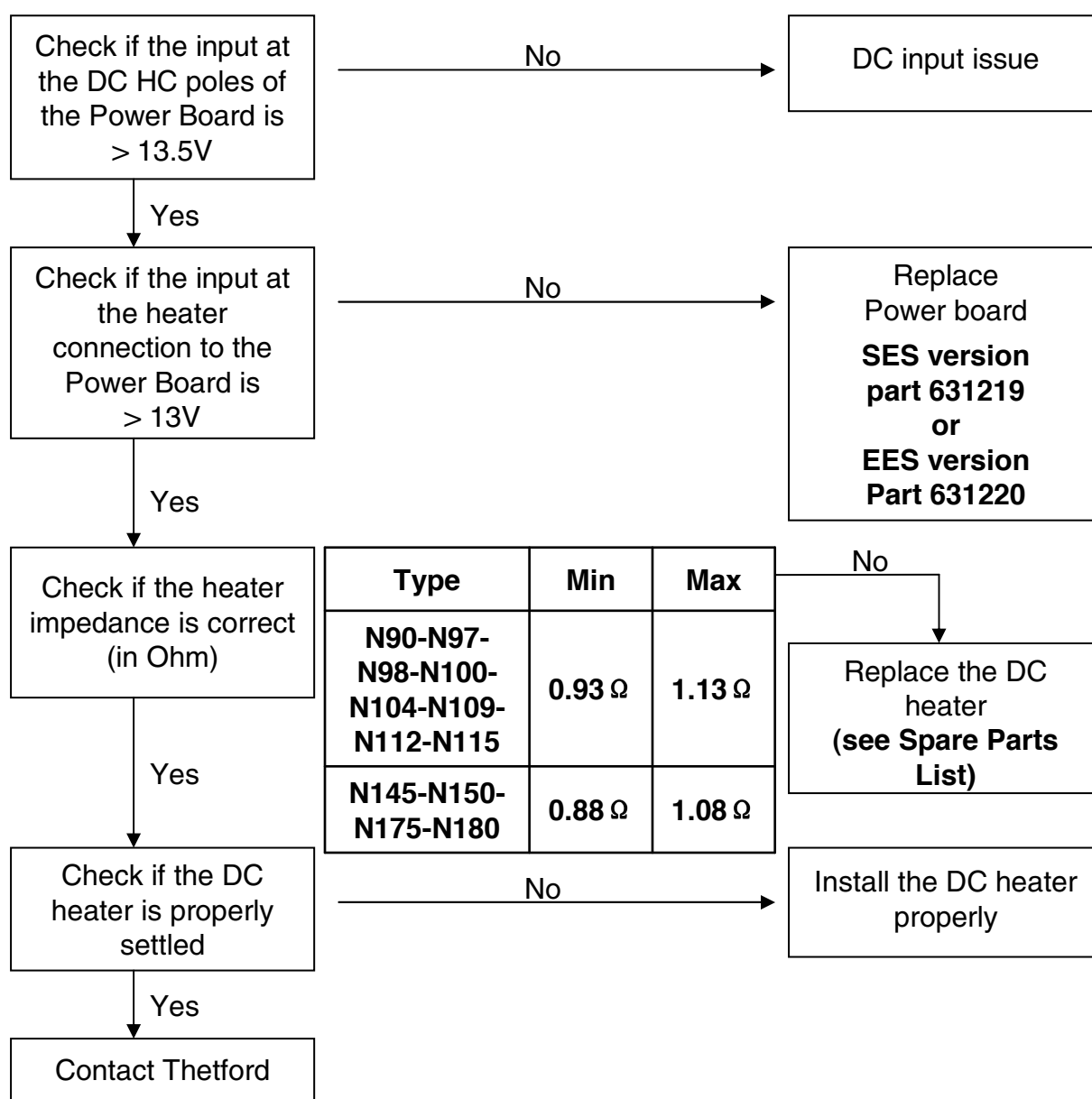


Lack of performance; No error code

➤ On 12 Volts



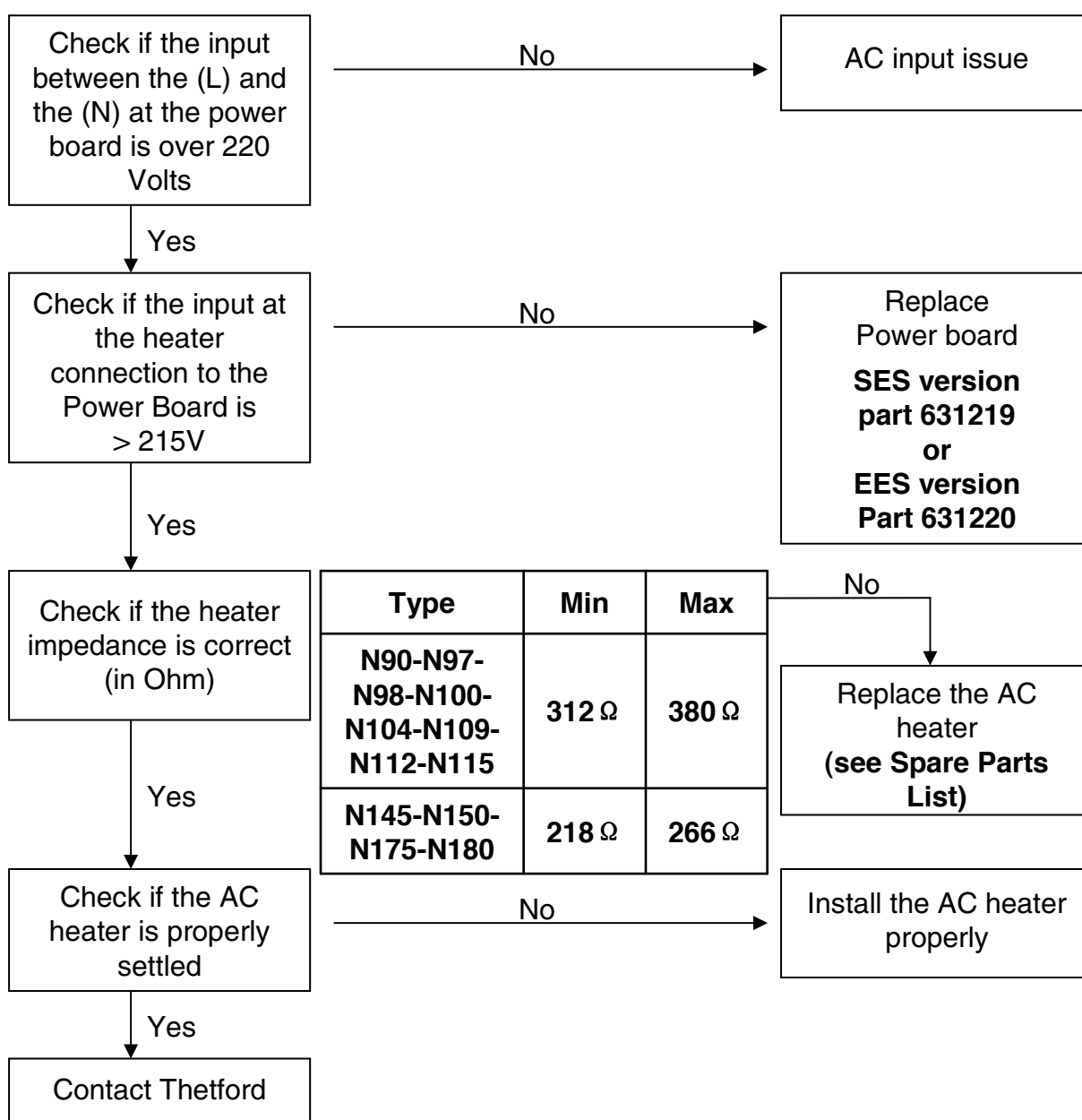
Do the testing of the fridges on the manual mode



➤ On 230 Volts



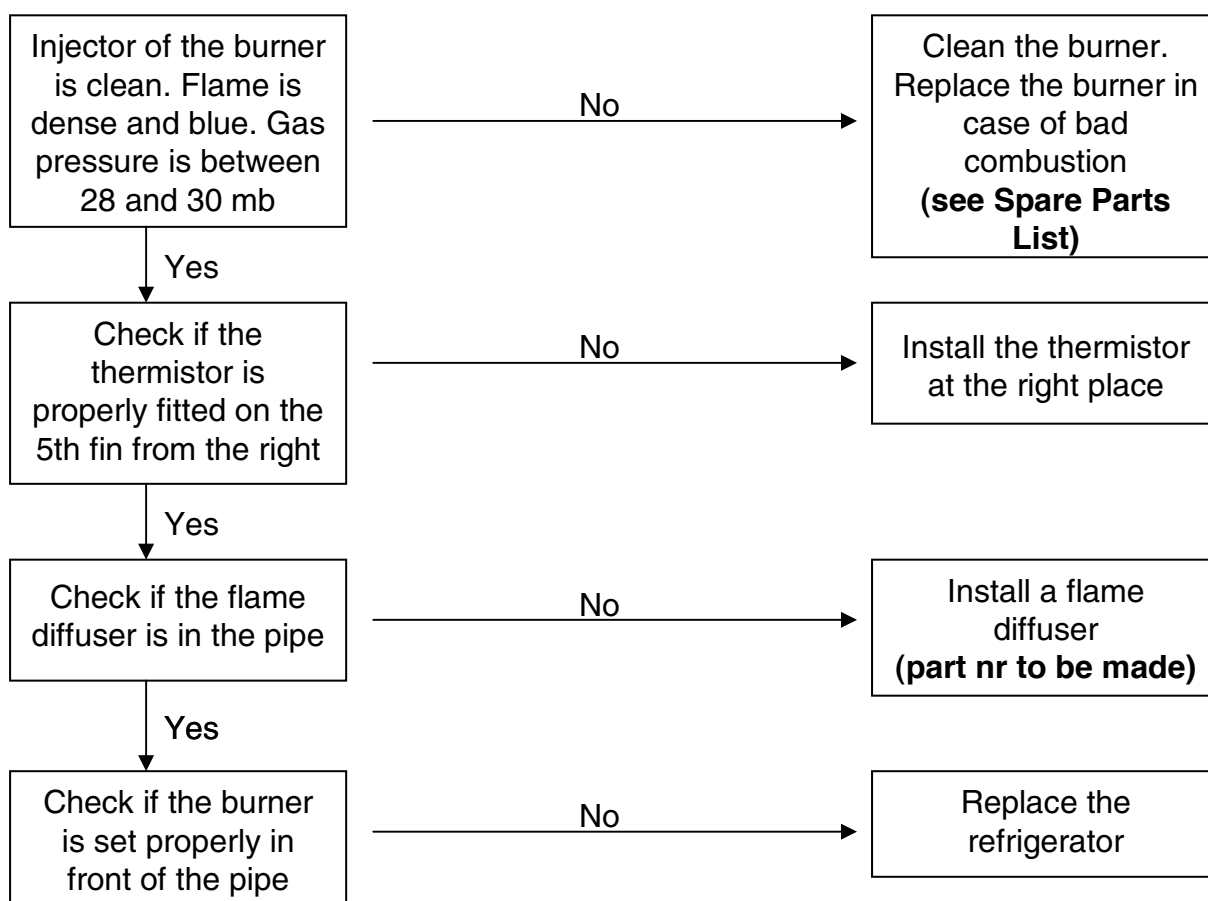
Do the testing of the fridges on the manual mode



➤ On Gas



Do the testing of the fridges on the manual mode



Power board on all LCD fridges

Issue : A non replaceable fuse (F5) is blowing on the power boards, caused by wrong signal in circuit (f.i. short cut).

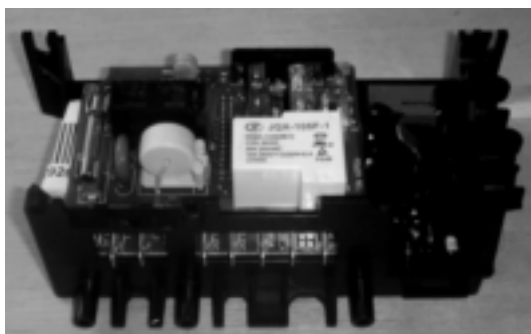
Solution : Re-settable fuse integrated on the power board.

Implementation : November 1st 2007

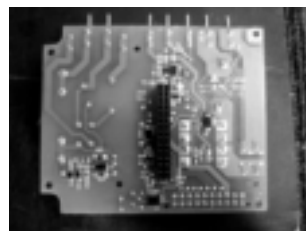
Spare part nr. : 631219 and 631220

Compensation : 30 minutes

Repair-instruction : See repair instruction part



Power board old version
Underside of Top Half F5 fuse is at top centre



Modified power board with re-settable fuse shown in position

